

[KO Validated] PSIP1 Rabbit Polyclonal Antibody



CAB18037

Product Information

Size:

20uL, 50uL, 100uL, 200uL

Observed MW:

75kDa

Calculated MW:

37kDa/60kDa

Applications:

WB IHC

Reactivity:

Human, Mouse, Rat

Antibody Information

Recommended dilutions:

WB 1:500 - 1:2000 IHC 1:50
- 1:200

Source:

Rabbit

Isotype:

IgG

Purification:

Affinity purification

Protein Background

Immunogen information

Gene ID:

11168

Uniprot

O75475

Synonyms:

PSIP1; DFS70; LEDGF; PAIP; PSIP2; p52; p75

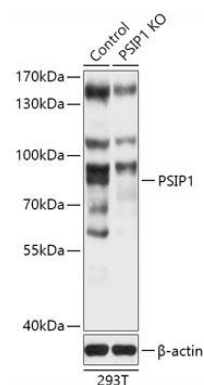
Immunogen:

Recombinant fusion protein containing a sequence corresponding to amino acids 301-530 of human PSIP1 (NP_150091.2).

Storage:

Store at -20°C. Avoid freeze / thaw cycles. Buffer: PBS with 0.02% sodium azide, 50% glycerol, pH7.3.

Product Images



Western blot analysis of extracts from normal (control) and PSIP1 knockout (KO) 293T cells, using PSIP1 antibody (CAB18037) at 1:1000 dilution. Secondary antibody: HRP Goat Anti-Rabbit IgG (H+L) (CABS014) at 1:10000 dilution. Lysates/proteins: 25ug per lane. Blocking buffer: 3% nonfat dry milk in TBST. Detection: ECL Basic Kit (CABM00020). Exposure time: 1s.