

# [KO Validated] MAP3K1 Rabbit Polyclonal Antibody

## CAB18041



### Product Information

**Size:**

20uL, 50uL, 100uL, 200uL

**Observed MW:**

164kDa

**Calculated MW:**

164kDa

**Applications:**

WB

**Reactivity:**

Human, Mouse

### Protein Background

The protein encoded by this gene is a serine/threonine kinase and is part of some signal transduction cascades, including the ERK and JNK kinase pathways as well as the NF-kappa-B pathway. The encoded protein is activated by autophosphorylation and requires magnesium as a cofactor in phosphorylating other proteins. This protein has E3 ligase activity conferred by a plant homeodomain (PHD) in its N-terminus and phospho-kinase activity conferred by a kinase domain in its C-terminus.

### Immunogen information

**Gene ID:**

4214

**Uniprot**

Q13233

**Synonyms:**

MAP3K1; MAPKKK1; MEKK; MEKK 1; MEKK1; SRXY6

### Antibody Information

**Recommended dilutions:**

WB 1:500 - 1:2000

**Source:**

Rabbit

**Isotype:**

IgG

**Purification:**

Affinity purification

**Immunogen:**

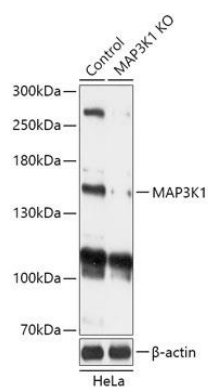
A synthetic peptide corresponding to a sequence within amino acids 1400 to the C-terminus of human MAP3K1 (NP\_005912.1).

**Storage:**

Store at -20°C. Avoid freeze / thaw cycles. Buffer: PBS with 0.02% sodium azide, 50% glycerol, pH7.3.

## Product Images

---



Western blot analysis of extracts from normal (control) and MAP3K1 knockout (KO) HeLa cells, using MAP3K1 antibody (CAB18041) at 1:1000 dilution. Secondary antibody: HRP Goat Anti-Rabbit IgG (H+L) (CABS014) at 1:10000 dilution. Lysates/proteins: 25ug per lane. Blocking buffer: 3% nonfat dry milk in TBST. Detection: ECL Basic Kit (CABM00020). Exposure time: 1min.