

# [KO Validated] TOM20 Rabbit Polyclonal Antibody

## CAB18047



### Product Information

**Size:**

20uL, 50uL, 100uL, 200uL

**Observed MW:**

16KDa

**Calculated MW:**

16kDa

**Applications:**

WB IHC IF

**Reactivity:**

Human, Mouse, Rat

### Antibody Information

**Recommended dilutions:**

WB 1:500 - 1:2000 IHC 1:50  
- 1:200 IF 1:50 - 1:200

**Source:**

Rabbit

**Isotype:**

IgG

**Purification:**

Affinity purification

### Protein Background

#### Immunogen information

**Gene ID:**

9804

**Uniprot**

Q15388

**Synonyms:**

TOMM20; MAS20; MOM19; TOM20

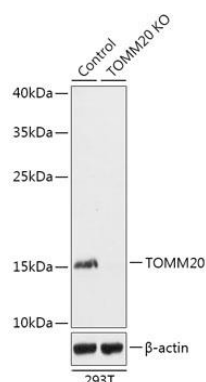
**Immunogen:**

Recombinant protein of human TOMM20.

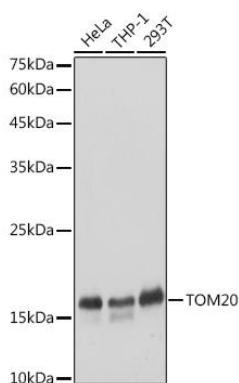
**Storage:**

Store at -20°C. Avoid freeze / thaw cycles. Buffer: PBS with 0.02% sodium azide, 50% glycerol, pH7.3.

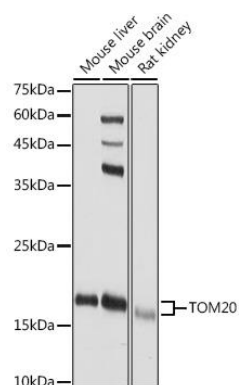
## Product Images



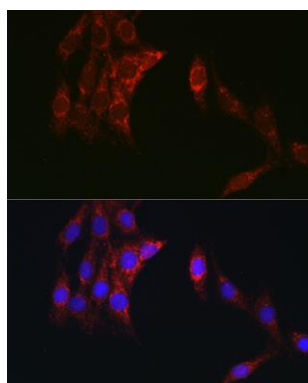
Western blot analysis of extracts from normal (control) and TOMM20 knockout (KO) 293T cells, using TOMM20 antibody (CAB18047) at 1:1000 dilution. Secondary antibody: HRP Goat Anti-Rabbit IgG (H+L) (CABS014) at 1:10000 dilution. Lysates/proteins: 25ug per lane. Blocking buffer: 3% nonfat dry milk in TBST. Detection: ECL Basic Kit (CABM00020). Exposure time: 1s.



Western blot analysis of extracts of various cell lines, using TOMM20 antibody (CAB18047) at 1:3000 dilution. Secondary antibody: HRP Goat Anti-Rabbit IgG (H+L) (CABS014) at 1:10000 dilution. Lysates/proteins: 25ug per lane. Blocking buffer: 3% nonfat dry milk in TBST. Detection: ECL Basic Kit (CABM00020). Exposure time: 1s.



Western blot analysis of extracts of various cell lines, using TOMM20 antibody (CAB18047) at 1:3000 dilution. Secondary antibody: HRP Goat Anti-Rabbit IgG (H+L) (CABS014) at 1:10000 dilution. Lysates/proteins: 25ug per lane. Blocking buffer: 3% nonfat dry milk in TBST. Detection: ECL Basic Kit (CABM00020). Exposure time: 1s.



Immunofluorescence analysis of C6 cells using [KO Validated] TOMM20 Rabbit pAb (CAB18047) at dilution of 1:100 (40x lens). Blue: DAPI for nuclear staining.