

**[KO Validated] RAB11A Rabbit Polyclonal  
Antibody  
CAB18048**



---

**Product Information**

**Size:**

20uL, 50uL, 100uL, 200uL

**Observed MW:**

25kDa

**Calculated MW:**

24kDa

**Applications:**

WB

**Reactivity:**

Human, Mouse, Rat

**Protein Background**

The protein encoded by this gene belongs to the Rab family of the small GTPase superfamily. It is associated with both constitutive and regulated secretory pathways, and may be involved in protein transport. Two transcript variants encoding different isoforms have been found for this gene.

**Immunogen information**

**Gene ID:**

8766

**Uniprot**

P62491

**Synonyms:**

RAB11A; YL8

**Antibody Information**

**Recommended dilutions:**

WB 1:500 - 1:2000

**Source:**

Rabbit

**Isotype:**

IgG

**Purification:**

Affinity purification

**Immunogen:**

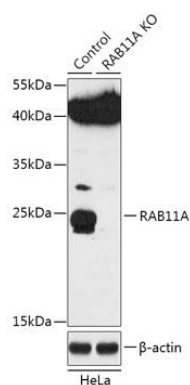
Recombinant protein of human RAB11A.

**Storage:**

Store at -20°C. Avoid freeze / thaw cycles. Buffer: PBS with 0.02% sodium azide, 50% glycerol, pH7.3.

## Product Images

---



Western blot analysis of extracts from normal (control) and RAB11A knockout (KO) HeLa cells, using RAB11A antibody (CAB18048) at 1:1000 dilution. Secondary antibody: HRP Goat Anti-Rabbit IgG (H+L) (CABS014) at 1:10000 dilution. Lysates/proteins: 25ug per lane. Blocking buffer: 3% nonfat dry milk in TBST. Detection: ECL Basic Kit (CABM00020). Exposure time: 30s.