

CYP24A1 Rabbit Polyclonal Antibody



CAB1805

Product Information

Size:

20uL, 50uL, 100uL, 200uL

Observed MW:

Refer to figures

Calculated MW:

43kDa/51kDa/58kDa

Applications:

IHC IF

Reactivity:

Human, Mouse, Rat

Antibody Information

Recommended dilutions:

IHC 1:50 - 1:100 IF 1:50 - 1:100

Source:

Rabbit

Isotype:

IgG

Purification:

Affinity purification

Protein Background

This gene encodes a member of the cytochrome P450 superfamily of enzymes. The cytochrome P450 proteins are monooxygenases which catalyze many reactions involved in drug metabolism and synthesis of cholesterol, steroids and other lipids. This mitochondrial protein initiates the degradation of 1, 25-dihydroxyvitamin D3, the physiologically active form of vitamin D3, by hydroxylation of the side chain. In regulating the level of vitamin D3, this enzyme plays a role in calcium homeostasis and the vitamin D endocrine system. Alternatively spliced transcript variants encoding different isoforms have been found for this gene.

Immunogen information

Gene ID:

1591

Uniprot

Q07973

Synonyms:

CYP24A1; CP24; CYP24; HCAI; HCINF1; P450-CC24

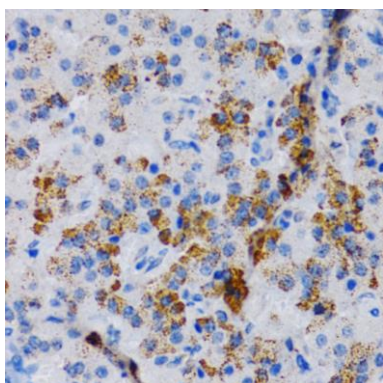
Immunogen:

Recombinant fusion protein containing a sequence corresponding to amino acids 36-448 of human CYP24A1 (NP_001122387.1).

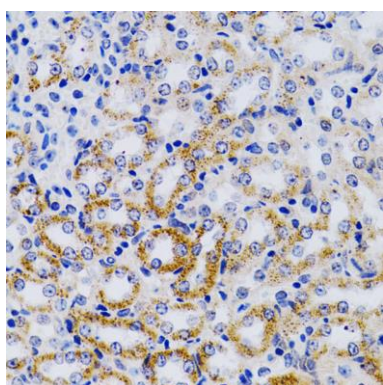
Storage:

Store at -20°C. Avoid freeze / thaw cycles. Buffer: PBS with 0.02% sodium azide, 50% glycerol, pH7.3.

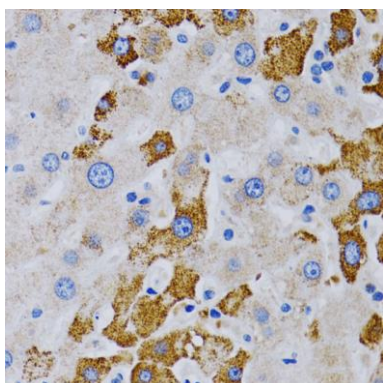
Product Images



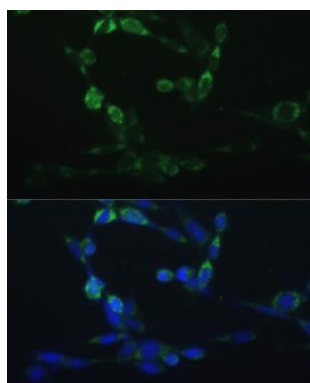
Immunohistochemistry of paraffin-embedded rat pancreas using CYP24A1 antibody (CAB1805) at dilution of 1:200 (40x lens).



Immunohistochemistry of paraffin-embedded mouse kidney using CYP24A1 antibody (CAB1805) at dilution of 1:200 (40x lens).



Immunohistochemistry of paraffin-embedded human liver cancer using CYP24A1 antibody (CAB1805) at dilution of 1:200 (40x lens).



Immunofluorescence analysis of NIH-3T3 cells using CYP24A1 Polyclonal Antibody (CAB1805) at dilution of 1:100 (40x lens). Blue: DAPI for nuclear staining.