

# [KO Validated] NLRX1 Rabbit Polyclonal Antibody

## CAB18065



### Product Information

**Size:**

20uL, 50uL, 100uL, 200uL

**Observed MW:**

108kDa

**Calculated MW:**

101kDa/107kDa

**Applications:**

WB

**Reactivity:**

Human, Mouse, Rat

### Antibody Information

**Recommended dilutions:**

WB 1:500 - 1:2000

**Source:**

Rabbit

**Isotype:**

IgG

**Purification:**

Affinity purification

### Protein Background

The protein encoded by this gene is a member of the NLR family and localizes to the outer mitochondrial membrane. The encoded protein is a regulator of mitochondrial antiviral responses. Three transcript variants encoding the same protein have been found for this gene.

### Immunogen information

**Gene ID:**

79671

**Uniprot**

Q86UT6

**Synonyms:**

NLRX1; CLR11.3; DLNB26; NOD26; NOD5; NOD9

**Immunogen:**

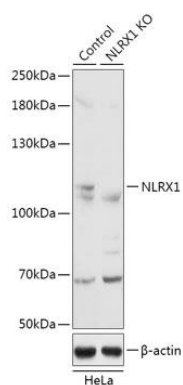
Recombinant fusion protein containing a sequence corresponding to amino acids 87-360 of human NLRX1 (NP\_001269073.1).

**Storage:**

Store at -20°C. Avoid freeze / thaw cycles. Buffer: PBS with 0.02% sodium azide, 50% glycerol, pH7.3.

## Product Images

---



Western blot analysis of extracts from normal (control) and NLRX1 knockout (KO) HeLa cells, using NLRX1 antibody (CAB18065) at 1:3000 dilution. Secondary antibody: HRP Goat Anti-Rabbit IgG (H+L) (CABS014) at 1:10000 dilution. Lysates/proteins: 25ug per lane. Blocking buffer: 3% nonfat dry milk in TBST. Detection: ECL Basic Kit (CABM00020). Exposure time: 10s.