

[KO Validated] MPG Rabbit Polyclonal Antibody



CAB18070

Product Information

Size:

20uL, 50uL, 100uL, 200uL

Observed MW:

37kDa

Calculated MW:

30kDa/32kDa

Applications:

WB IF

Reactivity:

Human, Mouse, Rat

Antibody Information

Recommended dilutions:

WB 1:500 - 1:2000 IF 1:50 - 1:100

Source:

Rabbit

Isotype:

IgG

Purification:

Affinity purification

Protein Background

Immunogen information

Gene ID:

4350

Uniprot

P29372

Synonyms:

MPG; AAG; ADPG; APNG; CRA36.1; MDG; Mid1; PIG11; PIG16; anpg

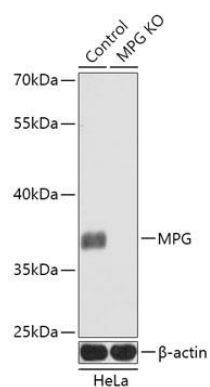
Immunogen:

Recombinant fusion protein containing a sequence corresponding to amino acids 1-293 of human MPG (NP_001015052.1).

Storage:

Store at -20°C. Avoid freeze / thaw cycles. Buffer: PBS with 0.02% sodium azide, 50% glycerol, pH7.3.

Product Images



Western blot analysis of extracts from normal (control) and MPG knockout (KO) HeLa cells, using MPG antibody (CAB18070) at 1:1000 dilution. Secondary antibody: HRP Goat Anti-Rabbit IgG (H+L) (CABS014) at 1:10000 dilution. Lysates/proteins: 25ug per lane. Blocking buffer: 3% nonfat dry milk in TBST. Detection: ECL Basic Kit (CABM00020). Exposure time: 60s.