

**[KO Validated] RING1B/RNF2 Rabbit Polyclonal
Antibody
CAB18076**



Product Information

Size:

20uL, 50uL, 100uL, 200uL

Observed MW:

38kDa

Calculated MW:

29kDa/37kDa

Applications:

WB IHC IF IP ChIP

Reactivity:

Human, Mouse, Rat

Antibody Information

Recommended dilutions:

WB 1:500 - 1:2000 IHC 1:50
- 1:200 IF 1:50 - 1:200 IP
1:50 - 1:200 ChIP 1:50 -
1:200

Source:

Rabbit

Isotype:

IgG

Purification:

Affinity purification

Protein Background

Polycomb group (PcG) of proteins form the multiprotein complexes that are important for the transcription repression of various genes involved in development and cell proliferation. The protein encoded by this gene is one of the PcG proteins. It has been shown to interact with, and suppress the activity of, transcription factor CP2 (TFCP2/CP2). Studies of the mouse counterpart suggested the involvement of this gene in the specification of anterior-posterior axis, as well as in cell proliferation in early development. This protein was also found to interact with huntingtin interacting protein 2 (HIP2), an ubiquitin-conjugating enzyme, and possess ubiquitin ligase activity.

Immunogen information

Gene ID:

6045

Uniprot

Q99496

Synonyms:

RNF2; BAP-1; BAP1; DING; HIP13; RING1B; RING2

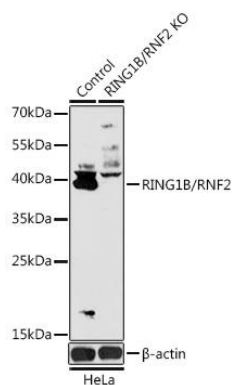
Immunogen:

Recombinant fusion protein containing a sequence corresponding to amino acids 1-336 of human RING1B/RING1B/RNF2 (NP_009143.1).

Storage:

Store at -20°C. Avoid freeze / thaw cycles. Buffer: PBS with 0.02% sodium azide, 50% glycerol, pH7.3.

Product Images



Western blot analysis of extracts from normal (control) and RING1B/RNF2 knockout (KO) HeLa cells, using RING1B/RNF2 antibody (CAB18076) at 1:1000 dilution. Secondary antibody: HRP Goat Anti-Rabbit IgG (H+L) (CABS014) at 1:10000 dilution. Lysates/proteins: 25ug per lane. Blocking buffer: 3% nonfat dry milk in TBST. Detection: ECL Basic Kit (CABM00020). Exposure time: 180s.