

SDHB Rabbit Monoclonal Antibody



CAB1809

Product Information

Size:

20uL, 50uL, 100uL, 200uL

Observed MW:

32KDa

Calculated MW:

32kDa

Applications:

WB

Reactivity:

Human, Mouse, Rat

Protein Background

Complex II of the respiratory chain, which is specifically involved in the oxidation of succinate, carries electrons from FADH to CoQ. The complex is composed of four nuclear-encoded subunits and is localized in the mitochondrial inner membrane. The iron-sulfur subunit is highly conserved and contains three cysteine-rich clusters which may comprise the iron-sulfur centers of the enzyme. Sporadic and familial mutations in this gene result in paragangliomas and pheochromocytoma, and support a link between mitochondrial dysfunction and tumorigenesis. [provided by RefSeq, Jul 2008]

Immunogen information

Gene ID:

6390

Uniprot

P21912

Synonyms:

CWS2; IP; PGL4; SDH; SDH1; SDH2; SDHIP

Antibody Information

Recommended dilutions:

WB 1:500 - 1:2000

Source:

Rabbit

Isotype:

IgG

Purification:

Affinity purification

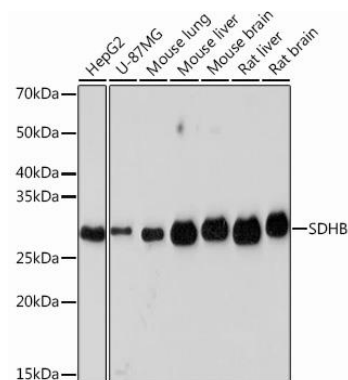
Immunogen:

A synthesized peptide derived from human SDHB

Storage:

Store at -20°C. Avoid freeze / thaw cycles. Buffer: PBS with 0.02% sodium azide, 0.05% BSA, 50% glycerol, pH7.3.

Product Images



Western blot - SDHB Rabbit mAb (CAB1809)