

# SLC22A6 Rabbit Polyclonal Antibody



CAB1814

---

## Product Information

### Size:

20uL, 50uL, 100uL, 200uL

### Observed MW:

62kDa

### Calculated MW:

55kDa/57kDa/60kDa/61kDa

### Applications:

WB

### Reactivity:

Human, Rat

## Protein Background

The protein encoded by this gene is involved in the sodium-dependent transport and excretion of organic anions, some of which are potentially toxic. The encoded protein is an integral membrane protein and may be localized to the basolateral membrane. Four transcript variants encoding four different isoforms have been found for this gene.

## Immunogen information

### Gene ID:

9356

### Uniprot

Q4U2R8

### Synonyms:

SLC22A6; HOAT1; OAT1; PAHT; ROAT1

## Antibody Information

### Recommended dilutions:

WB 1:500 - 1:2000

### Source:

Rabbit

### Isotype:

IgG

### Purification:

Affinity purification

### Immunogen:

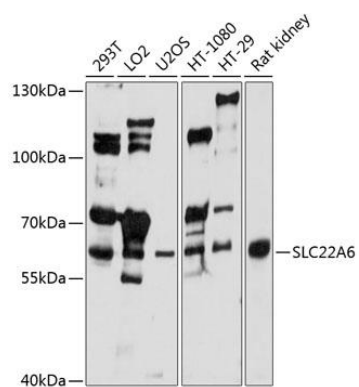
Recombinant protein of human SLC22A6

### Storage:

Store at -20°C. Avoid freeze / thaw cycles. Buffer: PBS with 0.02% sodium azide, 50% glycerol, pH7.3.

## Product Images

---



Western blot analysis of extracts of various cell lines, using SLC22A6 antibody (CAB1814) at 1:1000 dilution. Secondary antibody: HRP Goat Anti-Rabbit IgG (H+L) (CABS014) at 1:10000 dilution. Lysates/proteins: 25ug per lane. Blocking buffer: 3% nonfat dry milk in TBST. Detection: ECL Basic Kit (CABM00020). Exposure time: 5s.