

# ATF5 Rabbit Polyclonal Antibody



CAB18155

---

## Product Information

### Size:

20uL, 50uL, 100uL, 200uL

### Observed MW:

31kDa

### Calculated MW:

### Applications:

WB IF

### Reactivity:

Human, Mouse, Rat

## Antibody Information

### Recommended dilutions:

WB 1:500 - 1:2000 IF 1:50 - 1:200

### Source:

Rabbit

### Isotype:

IgG

### Purification:

Affinity purification

## Protein Background

### Immunogen information

#### Gene ID:

22809

#### Uniprot

Q9Y2D1

#### Synonyms:

ATFX; HMFN0395; ATF5

#### Immunogen:

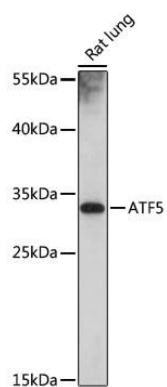
Recombinant protein of human ATF5.

#### Storage:

Store at -20°C. Avoid freeze / thaw cycles. Buffer: PBS with 0.02% sodium azide, 50% glycerol, pH7.3.

## Product Images

---



Western blot - ATF5 Polyclonal Antibody (CAB18155)