

# K63-linkage Specific Polyubiquitin Rabbit Polyclonal Antibody

## CAB18164



---

### Product Information

**Size:**

20uL, 50uL, 100uL, 200uL

**Observed MW:**

15-300kDa

**Calculated MW:****Applications:**

WB

**Reactivity:**

ALL

### Antibody Information

**Recommended dilutions:**

WB 1:500 - 1:2000

**Source:**

Rabbit

**Isotype:**

IgG

**Purification:**

Affinity purification

### Protein Background

#### Immunogen information

**Gene ID:****Uniprot****Synonyms:****Immunogen:**

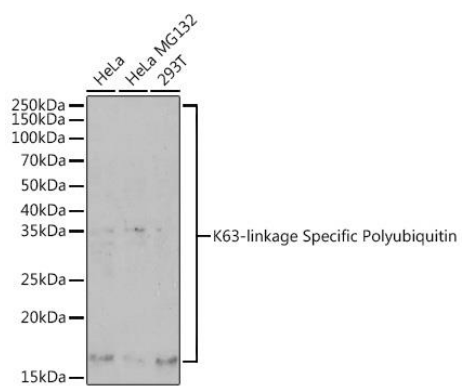
A synthetic peptide corresponding to a sequence containing polyubiquitinated protein (K63 linkage).

**Storage:**

Store at -20°C. Avoid freeze / thaw cycles. Buffer: PBS with 0.02% sodium azide, 50% glycerol, pH7.3.

## Product Images

---



Western blot - K63-linkage Specific Polyubiquitin Rabbit pAb (CAB18164)