

# PIN4 Rabbit Polyclonal Antibody



CAB18173

---

## Product Information

### Size:

20uL, 50uL, 100uL, 200uL

### Observed MW:

14KDa

### Calculated MW:

14kDa

### Applications:

WB

### Reactivity:

Human, Mouse, Rat

## Protein Background

This gene encodes a member of the parvulin subfamily of the peptidyl-prolyl cis/trans isomerase protein family. The encoded protein catalyzes the isomerization of peptidylprolyl bonds, and may play a role in the cell cycle, chromatin remodeling, and/or ribosome biogenesis. The encoded protein may play an additional role in the mitochondria. [provided by RefSeq, Dec 2009]

## Immunogen information

### Gene ID:

5303

### Uniprot

Q9Y237

### Synonyms:

EPVH; PAR14; PAR17; PIN4

## Antibody Information

### Recommended dilutions:

WB 1:500 - 1:2000

### Source:

Rabbit

### Isotype:

IgG

### Purification:

Affinity purification

### Immunogen:

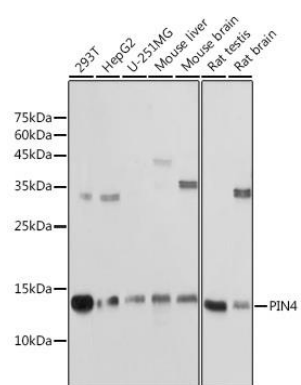
Recombinant protein of human PIN4.

### Storage:

Store at -20°C. Avoid freeze / thaw cycles. Buffer: PBS with 0.02% sodium azide, 50% glycerol, pH7.3.

## Product Images

---



Western blot - PIN4 Rabbit pAb (CAB18173)