

# EIF6 Rabbit Polyclonal Antibody



CAB1818

## Product Information

### Size:

20uL, 50uL, 100uL, 200uL

### Observed MW:

27kDa

### Calculated MW:

23kDa/26kDa

### Applications:

WB IF

### Reactivity:

Human

## Antibody Information

### Recommended dilutions:

WB 1:500 - 1:2000 IF 1:50 - 1:200

### Source:

Rabbit

### Isotype:

IgG

### Purification:

Affinity purification

## Protein Background

Hemidesmosomes are structures which link the basal lamina to the intermediate filament cytoskeleton. An important functional component of hemidesmosomes is the integrin beta-4 subunit (ITGB4), a protein containing two fibronectin type III domains. The protein encoded by this gene binds to the fibronectin type III domains of ITGB4 and may help link ITGB4 to the intermediate filament cytoskeleton. The encoded protein, which is insoluble and found both in the nucleus and in the cytoplasm, can function as a translation initiation factor and prevent the association of the 40S and 60S ribosomal subunits. Multiple non-protein coding transcript variants and variants encoding two different isoforms have been found for this gene.

## Immunogen information

### Gene ID:

3692

### Uniprot

P56537

### Synonyms:

EIF6; CAB; EIF3A; ITGB4BP; b(2)gcn; eIF-6; p27(BBP); p27BBP

### Immunogen:

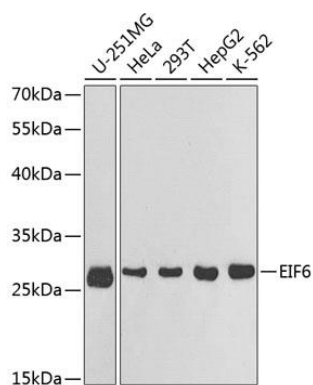
Recombinant fusion protein containing a sequence corresponding to amino acids 1-245 of human EIF6 (NP\_852133.1).

### Storage:

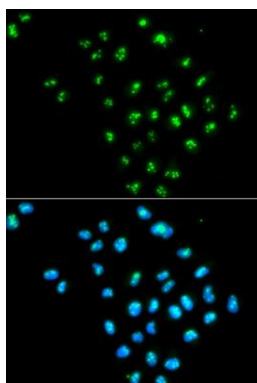
Store at -20°C. Avoid freeze / thaw cycles. Buffer: PBS with 0.02% sodium azide, 50% glycerol, pH7.3.

## Product Images

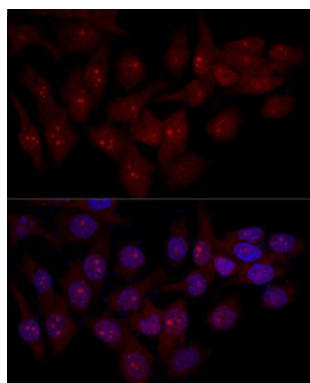
---



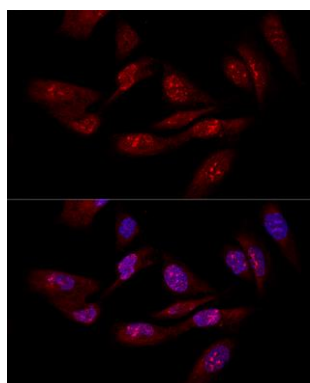
Western blot analysis of extracts of various cell lines, using EIF6 antibody (CAB1818) at 1:1000 dilution. Secondary antibody: HRP Goat Anti-Rabbit IgG (H+L) (CABS014) at 1:10000 dilution. Lysates/proteins: 25ug per lane. Blocking buffer: 3% nonfat dry milk in TBST.



Immunofluorescence analysis of MCF-7 cells using EIF6 antibody (CAB1818). Blue: DAPI for nuclear staining.



Confocal immunofluorescence analysis of HeLa cells using EIF6 antibody (CAB1818) at dilution of 1:50. Blue: DAPI for nuclear staining.



Confocal immunofluorescence analysis of U-2OS cells using EIF6 antibody (CAB1818) at dilution of 1:50. Blue: DAPI for nuclear staining.