

ZFPM1 Rabbit Polyclonal Antibody



CAB18183

Product Information

Size:

20uL, 50uL, 100uL, 200uL

Observed MW:

104kDa

Calculated MW:

104kDa

Applications:

WB IF

Reactivity:

Human, Mouse, Rat

Antibody Information

Recommended dilutions:

WB 1:500 - 1:2000 IF 1:50 - 1:200

Source:

Rabbit

Isotype:

IgG

Purification:

Affinity purification

Protein Background

Immunogen information

Gene ID:

161882

Uniprot

Q8IX07

Synonyms:

FOG; FOG1; ZNF408; ZNF89A; ZC2HC11A; ZFPM1

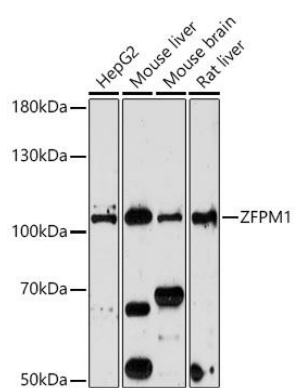
Immunogen:

Recombinant protein of human ZFPM1 .

Storage:

Store at -20°C. Avoid freeze / thaw cycles. Buffer: PBS with 0.02% sodium azide, 50% glycerol, pH7.3.

Product Images



Western blot - ZFPM1 Rabbit pAb (CAB18183)