

Mrpl18 Rabbit Polyclonal Antibody



CAB18186

Product Information

Size:

20uL, 50uL, 100uL, 200uL

Observed MW:

18kDa

Calculated MW:

21kDa

Applications:

WB

Reactivity:

Human, Mouse

Antibody Information

Recommended dilutions:

WB 1:500 - 1:2000

Source:

Rabbit

Isotype:

IgG

Purification:

Affinity purification

Protein Background

Immunogen information

Gene ID:

67681

Uniprot

Q9CQL5

Synonyms:

C79879; HSPC071; MRP-L18; 1010001C05Rik; Mrpl18

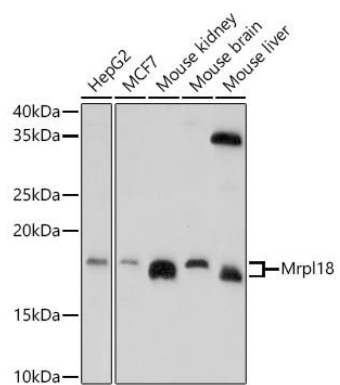
Immunogen:

Recombinant protein of human Mrpl18 .

Storage:

Store at -20°C. Avoid freeze / thaw cycles. Buffer: PBS with 0.02% sodium azide, 50% glycerol, pH7.3.

Product Images



Western blot - Mrp18 Polyclonal Antibody (CAB18186)