

Mrpl48 Rabbit Polyclonal Antibody



CAB18188

Product Information

Size:

20uL, 50uL, 100uL, 200uL

Observed MW:

19kDa

Calculated MW:

24kDa

Applications:

WB

Reactivity:

Human, Mouse, Rat

Protein Background

Immunogen information

Gene ID:

52443

Uniprot

Q8JZS9

Synonyms:

L48mt; CGI-118; MRP-L48; D4ErtD786e; 1810030E20Rik; 2610028L11Rik; Mrpl48

Immunogen:

Recombinant protein of human Mrpl48 .

Antibody Information

Recommended dilutions:

WB 1:500 - 1:2000

Source:

Rabbit

Isotype:

IgG

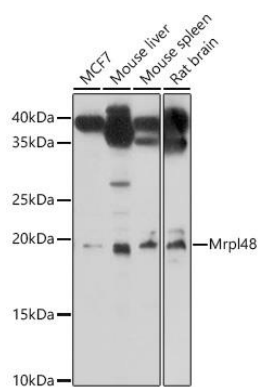
Purification:

Affinity purification

Storage:

Store at -20°C. Avoid freeze / thaw cycles. Buffer: PBS with 0.02% sodium azide, 50% glycerol, pH7.3.

Product Images



Western blot - Mrpl48 Polyclonal Antibody (CAB18188)