

CAB1819

Product Information

Size:

20uL, 50uL, 100uL, 200uL

Observed MW:

58kDa

Calculated MW:

58kDa

Applications:

WB IHC IF

Reactivity:

Human, Mouse, Rat

Antibody Information

Recommended dilutions:

WB 1:500 - 1:2000 IHC 1:50
- 1:200 IF 1:50 - 1:200

Source:

Rabbit

Isotype:

IgG

Purification:

Affinity purification

Protein Background

This gene encodes a highly conserved preproprotein that is proteolytically processed to generate four main cleavage products including saposins A, B, C, and D. Each domain of the precursor protein is approximately 80 amino acid residues long with nearly identical placement of cysteine residues and glycosylation sites. Saposins A-D localize primarily to the lysosomal compartment where they facilitate the catabolism of glycosphingolipids with short oligosaccharide groups. The precursor protein exists both as a secretory protein and as an integral membrane protein and has neurotrophic activities. Mutations in this gene have been associated with Gaucher disease and metachromatic leukodystrophy. Alternative splicing results in multiple transcript variants, at least one of which encodes an isoform that is proteolytically processed.

Immunogen information

Gene ID:

5660

Uniprot

P07602

Synonyms:

PSAP; GLBA; SAP1

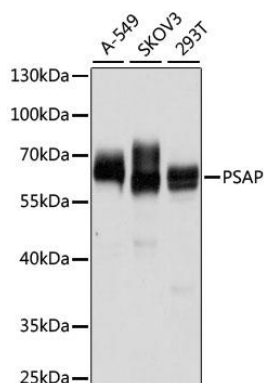
Immunogen:

Recombinant fusion protein containing a sequence corresponding to amino acids 60-310 of human PSAP (NP_002769.1).

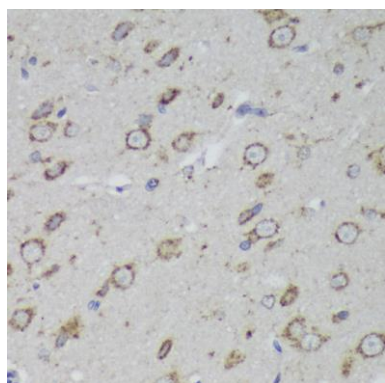
Storage:

Store at -20°C. Avoid freeze / thaw cycles. Buffer: PBS with 0.02% sodium azide, 50% glycerol, pH7.3.

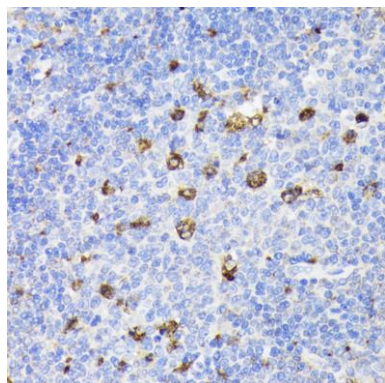
Product Images



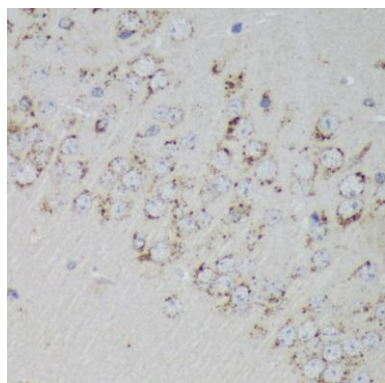
Western blot analysis of extracts of various cell lines, using PSAP antibody (CAB1819) at 1:1000 dilution. Secondary antibody: HRP Goat Anti-Rabbit IgG (H+L) (CABS014) at 1:10000 dilution. Lysates/proteins: 25ug per lane. Blocking buffer: 3% nonfat dry milk in TBST. Detection: ECL Enhanced Kit (CABM00021). Exposure time: 5s.



Immunohistochemistry of paraffin-embedded rat brain using PSAP antibody (CAB1819) at dilution of 1:200 (40x lens).



Immunohistochemistry of paraffin-embedded rat spleen using PSAP antibody (CAB1819) at dilution of 1:200 (40x lens).



Immunohistochemistry of paraffin-embedded mouse brain using PSAP antibody (CAB1819) at dilution of 1:200 (40x lens).