

CFAP61 Rabbit Polyclonal Antibody



CAB18194

Product Information

Size:

20uL, 50uL, 100uL, 200uL

Observed MW:

141KDa

Calculated MW:

Applications:

WB IHC IF

Reactivity:

Human, Mouse

Antibody Information

Recommended dilutions:

WB 1:500 - 1:2000 IHC 1:50
- 1:200 IF 1:50 - 1:200

Source:

Rabbit

Isotype:

IgG

Purification:

Affinity purification

Protein Background

Immunogen information

Gene ID:

26074

Uniprot

Q8NHU2

Synonyms:

C20orf26; CaM-IP3; dJ1002M8.3; dJ1178H5.4; CFAP61

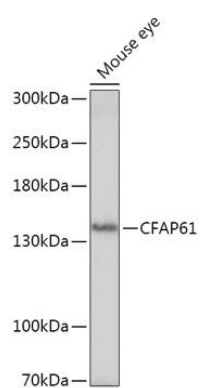
Immunogen:

A synthetic peptide of human CFAP61.

Storage:

Store at -20°C. Avoid freeze / thaw cycles. Buffer: PBS with 0.02% sodium azide, 50% glycerol, pH7.3.

Product Images



Western blot - CFAP61 Rabbit pAb (CAB18194)