

# K29-linkage Specific Polyubiquitin Rabbit Polyclonal Antibody

## CAB18198



---

### Product Information

**Size:**

20uL, 50uL, 100uL, 200uL

**Observed MW:****Calculated MW:****Applications:**

WB

**Reactivity:**

ALL

### Antibody Information

**Recommended dilutions:**

WB 1:500 - 1:2000

**Source:**

Rabbit

**Isotype:**

IgG

**Purification:**

Affinity purification

### Protein Background

### Immunogen information

**Gene ID:**

Uniprot

**Synonyms:****Immunogen:**

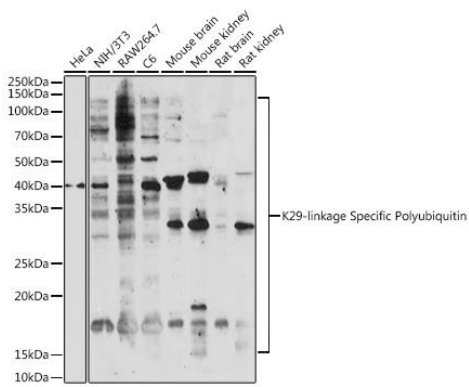
Recombinant protein of human K29-linkage Specific Polyubiquitin.

**Storage:**

Store at -20°C. Avoid freeze / thaw cycles. Buffer: PBS with 0.02% sodium azide, 50% glycerol, pH7.3.

## Product Images

---



Western blot - K29-linkage Specific Polyubiquitin Rabbit pAb (CAB18198)