

M1-linkage Specific Polyubiquitin Rabbit Polyclonal Antibody

CAB18200



Product Information

Size:

20uL, 50uL, 100uL, 200uL

Observed MW:

Refer to figures

Calculated MW:**Applications:**

WB

Reactivity:

ALL

Antibody Information

Recommended dilutions:

WB 1:500 - 1:2000

Source:

Rabbit

Isotype:

IgG

Purification:

Affinity purification

Protein Background

Immunogen information

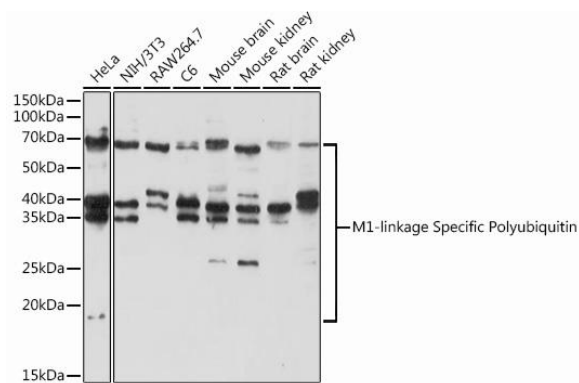
Gene ID:**Uniprot****Synonyms:****Immunogen:**

Recombinant protein of human M1-linkage Specific Polyubiquitin.

Storage:

Store at -20°C. Avoid freeze / thaw cycles. Buffer: PBS with 0.02% sodium azide, 50% glycerol, pH7.3.

Product Images



Western blot - M1-linkage Specific Polyubiquitin Rabbit pAb (CAB18200)