

S1PR2 Rabbit Polyclonal Antibody



CAB18205

Product Information

Size:

20uL, 50uL, 100uL, 200uL

Observed MW:

38kDa

Calculated MW:

39kDa

Applications:

WB

Reactivity:

Human, Mouse

Protein Background

This gene encodes a member of the G protein-coupled receptors, as well as the EDG family of proteins. The encoded protein is a receptor for sphingosine 1-phosphate, which participates in cell proliferation, survival, and transcriptional activation. Defects in this gene have been associated with congenital profound deafness.

Immunogen information

Gene ID:

9294

Uniprot

O95136

Synonyms:

EDG5; H218; LPB2; S1P2; AGR16; EDG-5; DFNB68; Gpcr13; S1PR2

Antibody Information

Recommended dilutions:

WB 1:500 - 1:2000

Source:

Rabbit

Isotype:

IgG

Purification:

Affinity purification

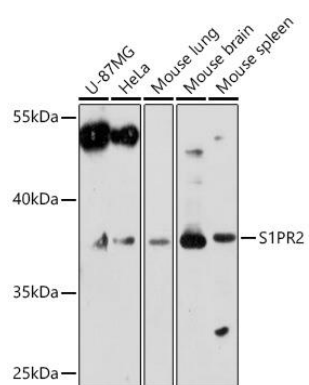
Immunogen:

Recombinant protein of human S1PR2 .

Storage:

Store at -20°C. Avoid freeze / thaw cycles. Buffer: PBS with 0.02% sodium azide, 50% glycerol, pH7.3.

Product Images



Western blot - S1PR2 Polyclonal Antibody (CAB18205)