

# SET1A Rabbit Polyclonal Antibody



CAB18231

---

## Product Information

### Size:

20uL, 50uL, 100uL, 200uL

### Observed MW:

300kDa

### Calculated MW:

186kDa

### Applications:

WB

### Reactivity:

Human, Mouse

## Protein Background

The protein encoded by this gene is a component of a histone methyltransferase (HMT) complex that produces mono-, di-, and trimethylated histone H3 at Lys4. Trimethylation of histone H3 at lysine 4 (H3K4me3) is a chromatin modification known to generally mark the transcription start sites of active genes. The protein contains SET domains, a RNA recognition motif domain and is a member of the class V-like SAM-binding methyltransferase superfamily.

## Immunogen information

### Gene ID:

9739

### Uniprot

O15047

### Synonyms:

Set1; KMT2F; Set1A; SETD1A; SET1A

## Antibody Information

### Recommended dilutions:

WB 1:500 - 1:2000

### Source:

Rabbit

### Isotype:

IgG

### Purification:

Affinity purification

### Immunogen:

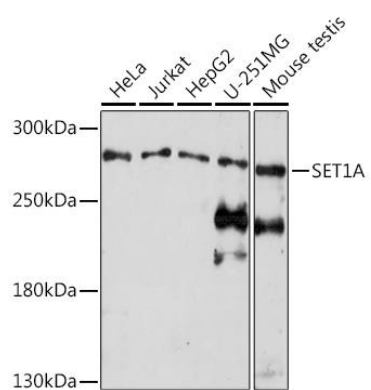
Recombinant protein of human SET1A.

### Storage:

Store at -20°C. Avoid freeze / thaw cycles. Buffer: PBS with 0.02% sodium azide, 50% glycerol, pH7.3.

## Product Images

---



Western blot - SET1A Rabbit pAb (CAB18231)