

POLR2F Rabbit Polyclonal Antibody



CAB1824

Product Information

Size:

20uL, 50uL, 100uL, 200uL

Observed MW:

14kDa

Calculated MW:

14kDa

Applications:

WB IF

Reactivity:

Human

Antibody Information

Recommended dilutions:

WB 1:500 - 1:2000 IF 1:50 - 1:100

Source:

Rabbit

Isotype:

IgG

Purification:

Affinity purification

Protein Background

This gene encodes the sixth largest subunit of RNA polymerase II, the polymerase responsible for synthesizing messenger RNA in eukaryotes. In yeast, this polymerase subunit, in combination with at least two other subunits, forms a structure that stabilizes the transcribing polymerase on the DNA template. Alternative splicing results in multiple transcript variants.

Immunogen information

Gene ID:

5435

Uniprot

P61218

Synonyms:

POLR2F; HRBP14.4; POLRF; RPABC14.4; RPABC2; RPB14.4; RPB6; RPC15

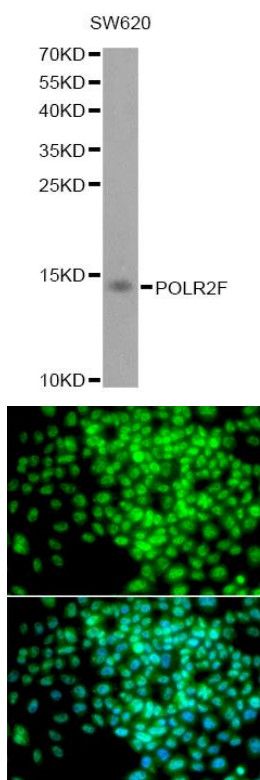
Immunogen:

Recombinant fusion protein containing a sequence corresponding to amino acids 1-127 of human POLR2F (NP_068809.1).

Storage:

Store at -20°C. Avoid freeze / thaw cycles. Buffer: PBS with 0.02% sodium azide, 50% glycerol, pH7.3.

Product Images



Western blot analysis of extracts of SW620 cells, using POLR2F antibody (CAB1824) at 1:1000 dilution. Secondary antibody: HRP Goat Anti-Rabbit IgG (H+L) (CABS014) at 1:10000 dilution. Lysates/proteins: 25ug per lane. Blocking buffer: 3% nonfat dry milk in TBST. Detection: ECL Basic Kit (CABM00020). Exposure time: 90s.

Immunofluorescence analysis of HeLa cells using POLR2F antibody (CAB1824). Blue: DAPI for nuclear staining.