

# MRPL55 Rabbit Polyclonal Antibody



CAB18242

---

## Product Information

### Size:

20uL, 50uL, 100uL, 200uL

### Observed MW:

15kDa

### Calculated MW:

15kDa

### Applications:

WB

### Reactivity:

Human

## Protein Background

Mammalian mitochondrial ribosomal proteins are encoded by nuclear genes and help in protein synthesis within the mitochondrion. Mitochondrial ribosomes (mitoribosomes) consist of a small 28S subunit and a large 39S subunit. They have an estimated 75% protein to rRNA composition compared to prokaryotic ribosomes, where this ratio is reversed. Another difference between mammalian mitoribosomes and prokaryotic ribosomes is that the latter contain a 5S rRNA. Among different species, the proteins comprising the mitoribosome differ greatly in sequence, and sometimes in biochemical properties, which prevents easy recognition by sequence homology. This gene encodes a 39S subunit protein. Multiple transcript variants encoding two different isoforms were identified through sequence analysis.

## Immunogen information

### Gene ID:

128308

### Uniprot

Q7Z7F7

## Antibody Information

### Recommended dilutions:

WB 1:500 - 1:2000

### Source:

Rabbit

### Isotype:

IgG

### Purification:

Affinity purification

### Synonyms:

L55nt; MRP-L55; AAVG5835; PRO19675; MRPL55

### Immunogen:

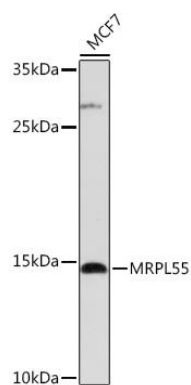
Recombinant protein of human MRPL55.

### Storage:

Store at -20°C. Avoid freeze / thaw cycles. Buffer: PBS with 0.02% sodium azide, 50% glycerol, pH7.3.

## Product Images

---



Western blot - MRPL55 Rabbit pAb (CAB18242)