

Mrpl55 Rabbit Polyclonal Antibody



CAB18244

Product Information

Size:

20uL, 50uL, 100uL, 200uL

Observed MW:

13-14kDa

Calculated MW:

15kDa

Applications:

WB

Reactivity:

Human, Mouse

Antibody Information

Recommended dilutions:

WB 1:500 - 1:2000

Source:

Rabbit

Isotype:

IgG

Purification:

Affinity purification

Protein Background

Immunogen information

Gene ID:

67212

Uniprot

Q9CZ83

Synonyms:

L55mt; MRP-L55; 2810038N09Rik; Mrpl55

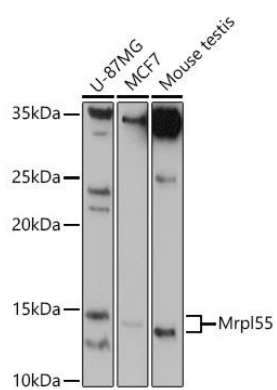
Immunogen:

Recombinant protein of human Mrpl55.

Storage:

Store at -20°C. Avoid freeze / thaw cycles. Buffer: PBS with 0.02% sodium azide, 50% glycerol, pH7.3.

Product Images



Western blot - Mrp15 Polyclonal Antibody (CAB18244)