

CDC6 Rabbit Polyclonal Antibody



CAB18249

Product Information

Size:

20uL, 50uL, 100uL, 200uL

Observed MW:

62kDa

Calculated MW:

62kDa

Applications:

WB

Reactivity:

Human

Protein Background

The protein encoded by this gene is highly similar to *Saccharomyces cerevisiae* Cdc6, a protein essential for the initiation of DNA replication. This protein functions as a regulator at the early steps of DNA replication. It localizes in cell nucleus during cell cycle G1, but translocates to the cytoplasm at the start of S phase. The subcellular translocation of this protein during cell cycle is regulated through its phosphorylation by Cdks. Transcription of this protein was reported to be regulated in response to mitogenic signals through transcriptional control mechanism involving E2F proteins.

Immunogen information

Gene ID:

990

Uniprot

Q99741

Synonyms:

CDC18L; HsCDC6; MGORS5; HsCDC18; CDC6

Antibody Information

Recommended dilutions:

WB 1:500 - 1:2000

Source:

Rabbit

Isotype:

IgG

Purification:

Affinity purification

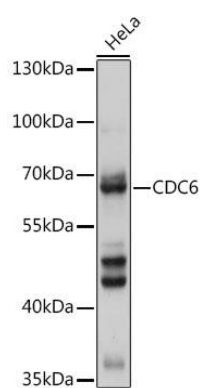
Immunogen:

Recombinant protein of human CDC6.

Storage:

Store at -20°C. Avoid freeze / thaw cycles. Buffer: PBS with 0.02% sodium azide, 50% glycerol, pH7.3.

Product Images



Western blot - CDC6 Rabbit pAb (CAB18249)