

# ZCCHC7 Rabbit Polyclonal Antibody



CAB18251

---

## Product Information

### Size:

20uL, 50uL, 100uL, 200uL

### Observed MW:

63kDa

### Calculated MW:

63kDa

### Applications:

WB

### Reactivity:

Mouse, Rat

## Antibody Information

### Recommended dilutions:

WB 1:500 - 1:2000

### Source:

Rabbit

### Isotype:

IgG

### Purification:

Affinity purification

## Protein Background

### Immunogen information

#### Gene ID:

84186

#### Uniprot

Q8N3Z6

#### Synonyms:

AIR1; HSPC086; ZCCHC7

#### Immunogen:

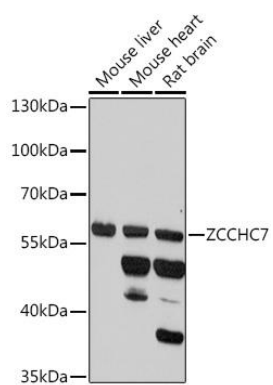
Recombinant protein of human ZCCHC7.

#### Storage:

Store at -20°C. Avoid freeze / thaw cycles. Buffer: PBS with 0.02% sodium azide, 50% glycerol, pH7.3.

## Product Images

---



Western blot - ZCCHC7 Polyclonal Antibody (CAB18251)