

GRIA1 Rabbit Polyclonal Antibody



CAB1826

Product Information

Size:

20uL, 50uL, 100uL, 200uL

Observed MW:

110kDa

Calculated MW:

92kDa/93kDa/101kDa/102kDa

Applications:

WB IHC IF

Reactivity:

Human, Mouse, Rat

Antibody Information

Recommended dilutions:

WB 1:500 - 1:2000 IHC 1:50
- 1:200 IF 1:50 - 1:200

Source:

Rabbit

Isotype:

IgG

Purification:

Affinity purification

Protein Background

Glutamate receptors are the predominant excitatory neurotransmitter receptors in the mammalian brain and are activated in a variety of normal neurophysiologic processes. These receptors are heteromeric protein complexes with multiple subunits, each possessing transmembrane regions, and all arranged to form a ligand-gated ion channel. The classification of glutamate receptors is based on their activation by different pharmacologic agonists. This gene belongs to a family of alpha-amino-3-hydroxy-5-methyl-4-isoxazole propionate (AMPA) receptors. Alternatively spliced transcript variants encoding different isoforms have been found for this gene.

Immunogen information

Gene ID:

2890

Uniprot

P42261

Synonyms:

GRIA1; GLUH1; GLUR1; GLURA; GluA1; HBGR1; GluR1

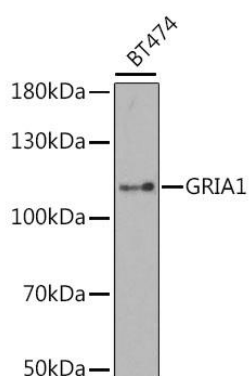
Immunogen:

Recombinant fusion protein containing a sequence corresponding to amino acids 19-300 of human GRIA1 (NP_000818.2).

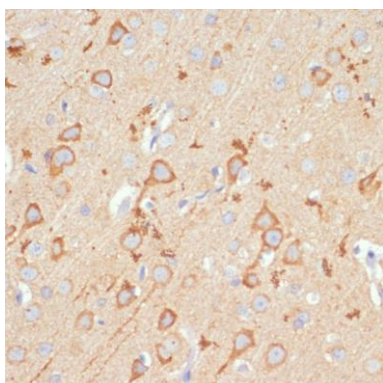
Storage:

Store at -20°C. Avoid freeze / thaw cycles. Buffer: PBS with 0.02% sodium azide, 50% glycerol, pH7.3.

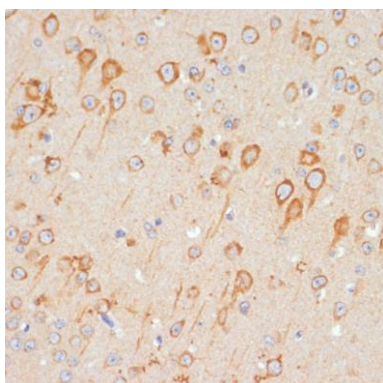
Product Images



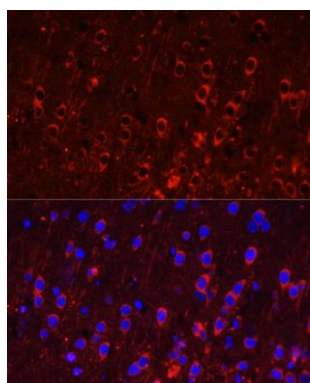
Western blot analysis of extracts of BT-474 cells, using GRIA1 antibody (CAB1826) at 1:1000 dilution. Secondary antibody: HRP Goat Anti-Rabbit IgG (H+L) (CABS014) at 1:10000 dilution. Lysates/proteins: 25ug per lane. Blocking buffer: 3% nonfat dry milk in TBST.



Immunohistochemistry of paraffin-embedded rat brain using GRIA1 antibody (CAB1826) at dilution of 1:100 (40x lens).



Immunohistochemistry of paraffin-embedded mouse brain using GRIA1 antibody (CAB1826) at dilution of 1:100 (40x lens).



Immunofluorescence analysis of rat brain using GRIA1 antibody (CAB1826) at dilution of 1:100. Blue: DAPI for nuclear staining.