

MEIS1 Rabbit Polyclonal Antibody



CAB18273

Product Information

Size:

20uL, 50uL, 100uL, 200uL

Observed MW:

50kDa/55kDa

Calculated MW:

43kDa

Applications:

WB IF

Reactivity:

Human, Mouse, Rat

Protein Background

Homeobox genes, of which the most well-characterized category is represented by the HOX genes, play a crucial role in normal development. In addition, several homeoproteins are involved in neoplasia. This gene encodes a homeobox protein belonging to the TALE ('three amino acid loop extension') family of homeodomain-containing proteins.

Immunogen information

Gene ID:

4211

Uniprot

O00470

Synonyms:

MEIS1

Antibody Information

Recommended dilutions:

WB 1:500 - 1:2000 IF 1:50 - 1:200

Source:

Rabbit

Isotype:

IgG

Purification:

Affinity purification

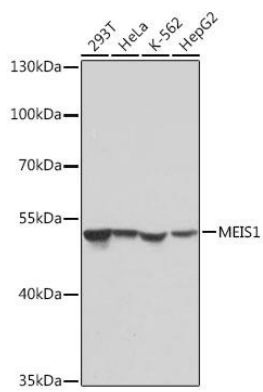
Immunogen:

A synthetic peptide of human MEIS1.

Storage:

Store at -20°C. Avoid freeze / thaw cycles. Buffer: PBS with 0.02% sodium azide, 50% glycerol, pH7.3.

Product Images



Western blot - MEIS1 Rabbit pAb (CAB18273)