

Mfsd2a Rabbit Polyclonal Antibody



CAB18288

Product Information

Size:

20uL, 50uL, 100uL, 200uL

Observed MW:

59kDa

Calculated MW:

59kDa

Applications:

WB

Reactivity:

Human, Mouse, Rat

Antibody Information

Recommended dilutions:

WB 1:500 - 1:2000

Source:

Rabbit

Isotype:

IgG

Purification:

Affinity purification

Protein Background

Immunogen information

Gene ID:

76574

Uniprot

Q9DA75

Synonyms:

NLS1; Mfsd2; 1700018O18Rik; Mfsd2a

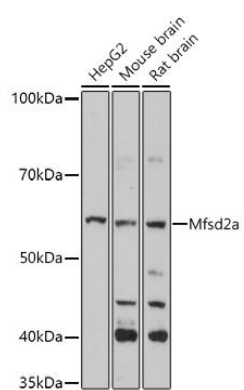
Immunogen:

Recombinant protein of human Mfsd2a.

Storage:

Store at -20°C. Avoid freeze / thaw cycles. Buffer: PBS with 0.02% sodium azide, 50% glycerol, pH7.3.

Product Images



Western blot - Mfsd2a Polyclonal Antibody (CAB18288)