

Pan Mono-Methyl lysine Rabbit Polyclonal Antibody

CAB18293



Product Information

Size:

20uL, 50uL, 100uL, 200uL

Observed MW:

17-90kDa

Calculated MW:**Applications:**

WB

Reactivity:

All

Antibody Information

Recommended dilutions:

WB 1:500 - 1:2000

Source:

Rabbit

Isotype:

IgG

Purification:

Affinity purification

Protein Background

Immunogen information

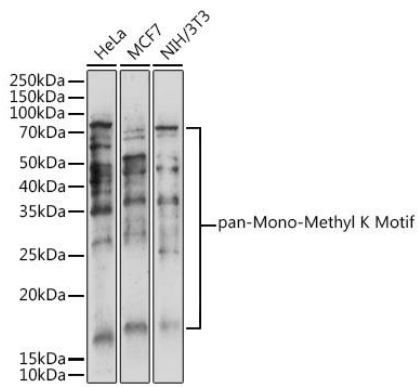
Gene ID:**Uniprot****Synonyms:****Immunogen:**

A synthetic peptide corresponding to a sequence containing monomethylated K.

Storage:

Store at -20°C. Avoid freeze / thaw cycles. Buffer: PBS with 0.02% sodium azide, 50% glycerol, pH7.3.

Product Images



Western blot - Pan Mono-Methyl lysine Rabbit pAb (CAB18293)