

IL10RA Rabbit Polyclonal Antibody



CAB1830

Product Information

Size:

20uL, 50uL, 100uL, 200uL

Observed MW:

90-110kDa

Calculated MW:

63kDa

Applications:

WB IHC IF

Reactivity:

Human, Mouse, Rat

Protein Background

The protein encoded by this gene is a receptor for interleukin 10. This protein is structurally related to interferon receptors. It has been shown to mediate the immunosuppressive signal of interleukin 10, and thus inhibits the synthesis of proinflammatory cytokines. This receptor is reported to promote survival of progenitor myeloid cells through the insulin receptor substrate-2/PI 3-kinase/AKT pathway. Activation of this receptor leads to tyrosine phosphorylation of JAK1 and TYK2 kinases. Two transcript variants, one protein-coding and the other not protein-coding, have been found for this gene.

Immunogen information

Gene ID:

3587

Uniprot

Q13651

Synonyms:

IL10RA; CD210; CD210a; CDW210A; HIL-10R; IL-10R1; IL10R

Antibody Information

Recommended dilutions:

WB 1:500 - 1:2000 IHC 1:50
- 1:200 IF 1:50 - 1:200

Source:

Rabbit

Isotype:

IgG

Purification:

Affinity purification

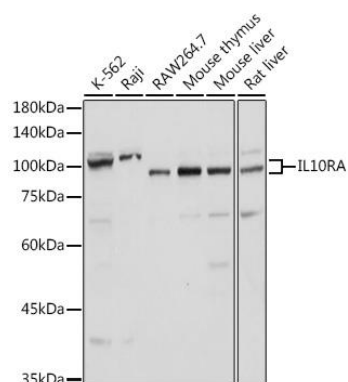
Immunogen:

Recombinant fusion protein containing a sequence corresponding to amino acids 22-230 of human IL10RA (NP_001549.2).

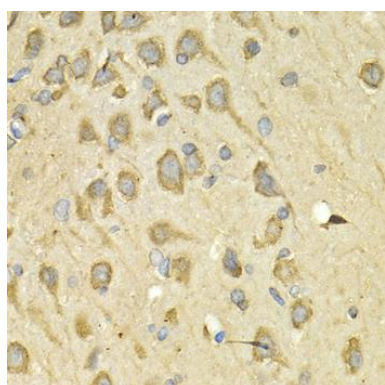
Storage:

Store at -20°C. Avoid freeze / thaw cycles. Buffer: PBS with 0.02% sodium azide, 50% glycerol, pH7.3.

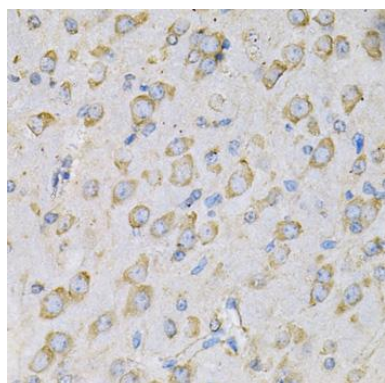
Product Images



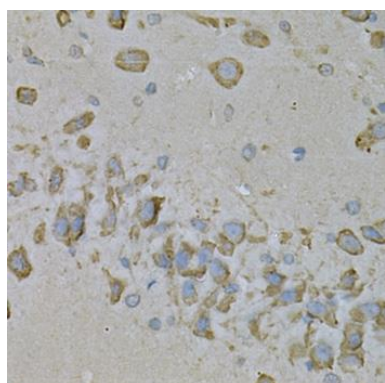
Western blot analysis of extracts of various cell lines, using IL10RA antibody (CAB1830) at 1:1000 dilution. Secondary antibody: HRP Goat Anti-Rabbit IgG (H+L) (CABS014) at 1:10000 dilution. Lysates/proteins: 25ug per lane. Blocking buffer: 3% nonfat dry milk in TBST. Detection: ECL Basic Kit (CABM00020). Exposure time: 1s.



Immunohistochemistry of paraffin-embedded rat brain using IL10RA Antibody (CAB1830) at dilution of 1:200 (40x lens).



Immunohistochemistry of paraffin-embedded rat brain using IL10RA Antibody (CAB1830) at dilution of 1:100 (40x lens).



Immunohistochemistry of paraffin-embedded mouse brain using IL10RA Antibody (CAB1830) at dilution of 1:100 (40x lens).