

PARP1 Mouse Monoclonal Antibody



CAB18303

Product Information

Size:

20uL, 50uL, 100uL

Observed MW:

89kDa/130KDa

Calculated MW:

113kDa

Applications:

WB

Reactivity:

Human, Mouse

Antibody Information

Recommended dilutions:

WB 1:500 - 1:2000

Source:

Mouse

Isotype:

IgG

Purification:

Affinity purification

Protein Background

This gene encodes a chromatin-associated enzyme, poly(ADP-ribose)transferase, which modifies various nuclear proteins by poly(ADP-ribose)ation. The modification is dependent on DNA and is involved in the regulation of various important cellular processes such as differentiation, proliferation, and tumor transformation and also in the regulation of the molecular events involved in the recovery of cell from DNA damage. In addition, this enzyme may be the site of mutation in Fanconi anemia, and may participate in the pathophysiology of type I diabetes.

Immunogen information

Gene ID:

142

Uniprot

P09874

Synonyms:

ADPRT; ADPRT 1; ADPRT1; ARTD1; PARP; PARP-1; PPOL; pADPRT-1; PARP1; Cleaved PARP; PARP1

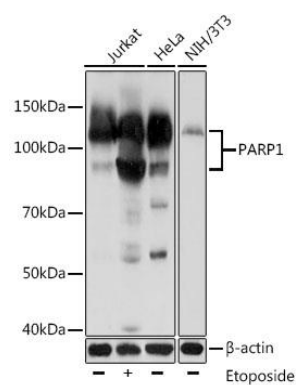
Immunogen:

Recombinant protein of human PARP1.

Storage:

Store at -20°C. Avoid freeze / thaw cycles. Buffer: PBS with 0.02% sodium azide, 50% glycerol, pH7.3.

Product Images



Western blot - PARP1 Mouse mAb (CAB18303)