

GPR22 Rabbit Polyclonal Antibody



CAB18313

Product Information

Size:

20uL, 50uL, 100uL, 200uL

Observed MW:

55kDa

Calculated MW:

49kDa

Applications:

WB IF

Reactivity:

Human, Mouse, Rat

Antibody Information

Recommended dilutions:

WB 1:500 - 1:2000 IF 1:50 - 1:200

Source:

Rabbit

Isotype:

IgG

Purification:

Affinity purification

Protein Background

This gene is a member of the G-protein coupled receptor 1 family and encodes a multi-pass membrane protein.

Immunogen information

Gene ID:

2845

Uniprot

Q99680

Synonyms:

GPR22

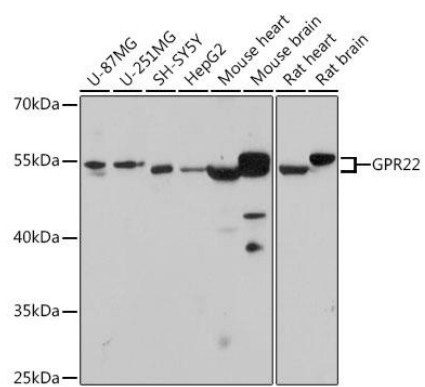
Immunogen:

Recombinant protein of human GPR22.

Storage:

Store at -20°C. Avoid freeze / thaw cycles. Buffer: PBS with 0.02% sodium azide, 50% glycerol, pH7.3.

Product Images



Western blot - GPR22 Polyclonal Antibody (CAB18313)