

TET3 Rabbit Polyclonal Antibody



CAB18319

Product Information

Size:

20uL, 50uL, 100uL, 200uL

Observed MW:

179kDa

Calculated MW:

77kDa/166kDa/179kDa

Applications:

WB IF

Reactivity:

Human, Mouse

Protein Background

Members of the ten-eleven translocation (TET) gene family, including TET3, play a role in the DNA methylation process (Langemeijer et al., 2009 [PubMed 19923888]).[supplied by OMIM, Nov 2010]

Immunogen information

Gene ID:

200424

Uniprot

O43151

Synonyms:

TET3; hCG_40738; TET3

Antibody Information

Recommended dilutions:

WB 1:500 - 1:2000 IF 1:50 - 1:200

Source:

Rabbit

Isotype:

IgG

Purification:

Affinity purification

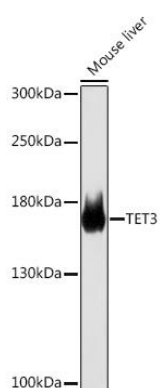
Immunogen:

Recombinant protein of human TET3.

Storage:

Store at -20°C. Avoid freeze / thaw cycles. Buffer: PBS with 0.02% sodium azide, 50% glycerol, pH7.3.

Product Images



Western blot - TET3 Rabbit pAb (CAB18319)