

# THOC2 Rabbit Polyclonal Antibody



CAB18332

---

## Product Information

### Size:

20uL, 50uL, 100uL, 200uL

### Observed MW:

160kDa

### Calculated MW:

183kDa

### Applications:

WB

### Reactivity:

Human, Mouse

## Protein Background

The TREX multiprotein complex binds specifically to spliced mRNAs to facilitate mRNA export. The protein encoded by this gene is a member of the THO complex, a subset of the TREX complex. The encoded protein interacts with the THOC1 protein.

## Immunogen information

### Gene ID:

57187

### Uniprot

Q8NI27

### Synonyms:

THO2; MRX12; MRX35; CXorf3; hTREX120; dJ506G2.1; THOC2

## Antibody Information

### Recommended dilutions:

WB 1:500 - 1:2000

### Source:

Rabbit

### Isotype:

IgG

### Purification:

Affinity purification

### Immunogen:

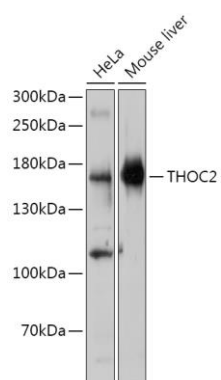
Recombinant protein of human THOC2.

### Storage:

Store at -20°C. Avoid freeze / thaw cycles. Buffer: PBS with 0.02% sodium azide, 50% glycerol, pH7.3.

## Product Images

---



Western blot - THOC2 Polyclonal Antibody (CAB18332)