

SDC4 Rabbit Polyclonal Antibody



CAB1834

Product Information

Size:

20uL, 50uL, 100uL, 200uL

Observed MW:

35kDa

Calculated MW:

16kDa/21kDa

Applications:

WB IHC

Reactivity:

Human

Protein Background

The protein encoded by this gene is a transmembrane (type I) heparan sulfate proteoglycan that functions as a receptor in intracellular signaling. The encoded protein is found as a homodimer and is a member of the syndecan proteoglycan family. This gene is found on chromosome 20, while a pseudogene has been found on chromosome 22.

Immunogen information

Gene ID:

6385

Uniprot

P31431

Synonyms:

SDC4; SYND4

Antibody Information

Recommended dilutions:

WB 1:500 - 1:2000 IHC 1:50
- 1:200

Source:

Rabbit

Isotype:

IgG

Purification:

Affinity purification

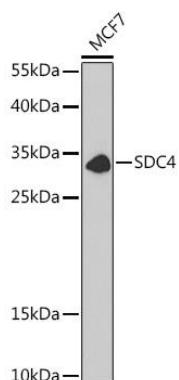
Immunogen:

Recombinant fusion protein containing a sequence corresponding to amino acids 19-145 of human SDC4 (NP_002990.2).

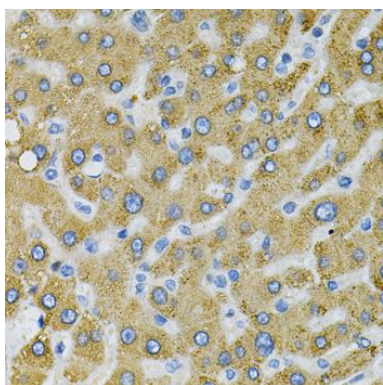
Storage:

Store at -20°C. Avoid freeze / thaw cycles. Buffer: PBS with 0.02% sodium azide, 50% glycerol, pH7.3.

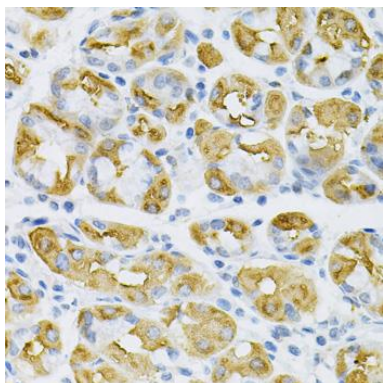
Product Images



Western blot analysis of extracts of MCF7 cells, using SDC4 antibody (CAB1834) at 1:1000 dilution. Secondary antibody: HRP Goat Anti-Rabbit IgG (H+L) (CABS014) at 1:10000 dilution. Lysates/proteins: 25ug per lane. Blocking buffer: 3% nonfat dry milk in TBST.



Immunohistochemistry of paraffin-embedded human liver damage using SDC4 Antibody (CAB1834) at dilution of 1:100 (40x lens).



Immunohistochemistry of paraffin-embedded human stomach using SDC4 Antibody (CAB1834) at dilution of 1:100 (40x lens).