

# PCIF1 Rabbit Polyclonal Antibody



CAB18347

---

## Product Information

### Size:

20uL, 50uL, 100uL, 200uL

### Observed MW:

81kDa

### Calculated MW:

81kDa

### Applications:

WB IHC IP

### Reactivity:

Human, Mouse, Rat

## Antibody Information

### Recommended dilutions:

WB 1:500 - 1:2000 IHC 1:50  
- 1:200 IP 1:50 - 1:200

### Source:

Rabbit

### Isotype:

IgG

### Purification:

Affinity purification

## Protein Background

### Immunogen information

#### Gene ID:

63935

#### Uniprot

Q9H4Z3

#### Synonyms:

CAPAM; hCAPAM; hPCIF1; C20orf67; PPP1R121; PCIF1

#### Immunogen:

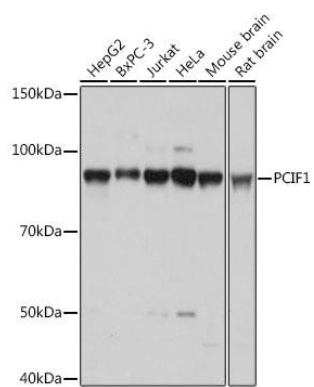
Recombinant protein of human PCIF1.

#### Storage:

Store at -20°C. Avoid freeze / thaw cycles. Buffer: PBS with 0.02% sodium azide, 50% glycerol, pH7.3.

## Product Images

---



Western blot - PCIF1 Rabbit pAb (CAB18347)