

SFTPC Rabbit Polyclonal Antibody



CAB1835

Product Information

Size:

20uL, 50uL, 100uL, 200uL

Observed MW:

21kDa

Calculated MW:

20kDa/21kDa

Applications:

WB IHC IF

Reactivity:

Human, Mouse, Rat

Antibody Information

Recommended dilutions:

WB 1:500 - 1:2000 IHC 1:50
- 1:200 IF 1:50 - 1:200

Source:

Rabbit

Isotype:

IgG

Purification:

Affinity purification

Protein Background

This gene encodes the pulmonary-associated surfactant protein C (SPC), an extremely hydrophobic surfactant protein essential for lung function and homeostasis after birth. Pulmonary surfactant is a surface-active lipoprotein complex composed of 90% lipids and 10% proteins which include plasma proteins and apolipoproteins SPA, SPB, SPC and SPD. The surfactant is secreted by the alveolar cells of the lung and maintains the stability of pulmonary tissue by reducing the surface tension of fluids that coat the lung. Multiple mutations in this gene have been identified, which cause pulmonary surfactant metabolism dysfunction type 2, also called pulmonary alveolar proteinosis due to surfactant protein C deficiency, and are associated with interstitial lung disease in older infants, children, and adults. Alternatively spliced transcript variants encoding different protein isoforms have been identified.

Immunogen information

Gene ID:

6440

Uniprot

P11686

Synonyms:

SFTPC; BRICD6; PSP-C; SFTP2; SMDP2; SP-C

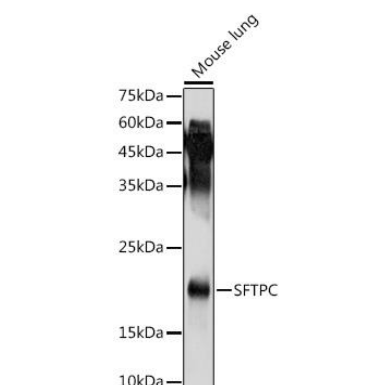
Immunogen:

Recombinant fusion protein containing a sequence corresponding to amino acids 1-197 of human SFTPC (NP_001165881.1).

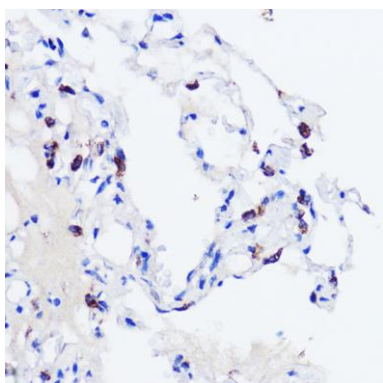
Storage:

Store at -20°C. Avoid freeze / thaw cycles. Buffer: PBS with 0.02% sodium azide, 50% glycerol, pH7.3.

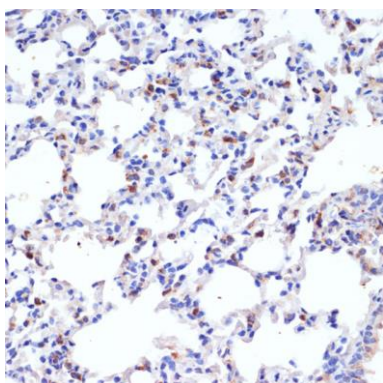
Product Images



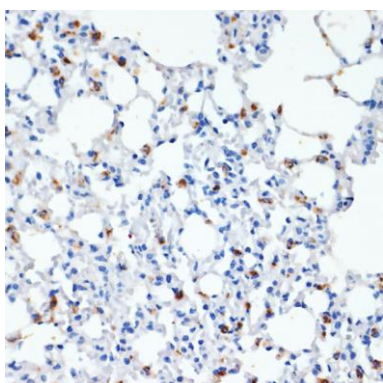
Western blot analysis of extracts of Mouse lung, using SFTPC antibody (CAB1835) at 1:1000 dilution. Secondary antibody: HRP Goat Anti-Rabbit IgG (H+L) (CABS014) at 1:10000 dilution. Lysates/proteins: 25ug per lane. Blocking buffer: 3% nonfat dry milk in TBST. Detection: ECL Basic Kit (CABM00020). Exposure time: 90s.



Immunohistochemistry of paraffin-embedded human lung using SFTPC antibody (CAB1835) at dilution of 1:200 (40x lens).



Immunohistochemistry of paraffin-embedded rat lung using SFTPC antibody (CAB1835) at dilution of 1:200 (40x lens).



Immunohistochemistry of paraffin-embedded mouse lung using SFTPC antibody (CAB1835) at dilution of 1:200 (40x lens).