

PIK3R1/PIK3R2/PIK3R3 Rabbit Polyclonal Antibody

CAB18355



Product Information

Size:

20uL, 50uL, 100uL, 200uL

Observed MW:

54KDa

Calculated MW:**Applications:**

WB

Reactivity:

Human, Mouse, Rat

Antibody Information

Recommended dilutions:

WB 1:500 - 1:2000

Source:

Rabbit

Isotype:

IgG

Purification:

Affinity purification

Protein Background

Immunogen information

Gene ID:

8503/5295/5296

Uniprot**Synonyms:**

PIK3R1/PIK3R2/PIK3R3

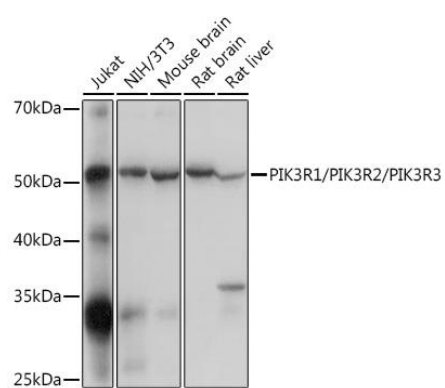
Immunogen:

Recombinant protein of human PIK3R1/PIK3R2/PIK3R3.

Storage:

Store at -20°C. Avoid freeze / thaw cycles. Buffer: PBS with 0.02% sodium azide, 50% glycerol, pH7.3.

Product Images



Western blot - PIK3R1/PIK3R2/PIK3R3 Rabbit pAb (CAB18355)