

SLC5A3 Rabbit Polyclonal Antibody



CAB18380

Product Information

Size:

20uL, 50uL, 100uL, 200uL

Observed MW:

80kDa

Calculated MW:

Applications:

WB

Reactivity:

Human, Mouse, Rat

Antibody Information

Recommended dilutions:

WB 1:500 - 1:2000

Source:

Rabbit

Isotype:

IgG

Purification:

Affinity purification

Protein Background

Immunogen information

Gene ID:

6526

Uniprot

P53794

Synonyms:

BCW2; SMIT; SMIT1; SMIT2; SLC5A3

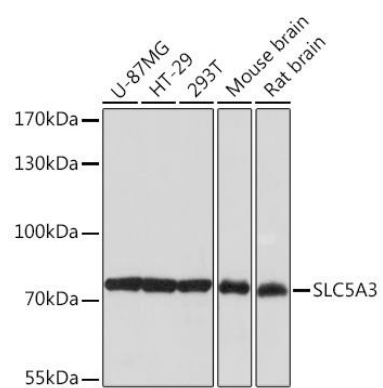
Immunogen:

Recombinant protein of human SLC5A3.

Storage:

Store at -20°C. Avoid freeze / thaw cycles. Buffer: PBS with 0.02% sodium azide, 50% glycerol, pH7.3.

Product Images



Western blot - SLC5A3 Rabbit pAb (CAB18380)