

# SH2D2A Rabbit Polyclonal Antibody



CAB18401

---

## Product Information

### Size:

20uL, 50uL, 100uL, 200uL

### Observed MW:

41kDa/43kDa

### Calculated MW:

39kDa/40kDa/42kDa/44kDa

### Applications:

WB

### Reactivity:

Human, Mouse, Rat

## Protein Background

This gene encodes an adaptor protein thought to function in T-cell signal transduction. A related protein in mouse is responsible for the activation of lymphocyte-specific protein-tyrosine kinase and functions in downstream signaling. Alternative splicing results in multiple transcript variants.

## Immunogen information

### Gene ID:

9047

### Uniprot

Q9NP31

### Synonyms:

F2771; SCAP; TSAD; VRAP; SH2D2A

## Antibody Information

### Recommended dilutions:

WB 1:500 - 1:2000

### Source:

Rabbit

### Isotype:

IgG

### Purification:

Affinity purification

### Immunogen:

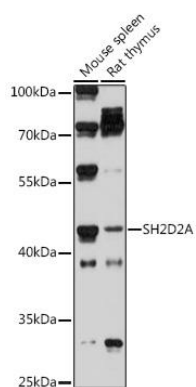
Recombinant protein of human SH2D2A.

### Storage:

Store at -20°C. Avoid freeze / thaw cycles. Buffer: PBS with 0.02% sodium azide, 50% glycerol, pH7.3.

## Product Images

---



Western blot - SH2D2A Rabbit pAb (CAB18401)