

# SMC3 Rabbit Polyclonal Antibody



CAB18402

---

## Product Information

### Size:

20uL, 50uL, 100uL, 200uL

### Observed MW:

142kDa

### Calculated MW:

### Applications:

WB

### Reactivity:

Human, Mouse

## Antibody Information

### Recommended dilutions:

WB 1:500 - 1:2000

### Source:

Rabbit

### Isotype:

IgG

### Purification:

Affinity purification

## Protein Background

### Immunogen information

#### Gene ID:

9126

#### Uniprot

Q9UQE7

#### Synonyms:

BAM; BMH; CDLS3; CSPG6; HCAP; SMC3L1; SMC3

#### Immunogen:

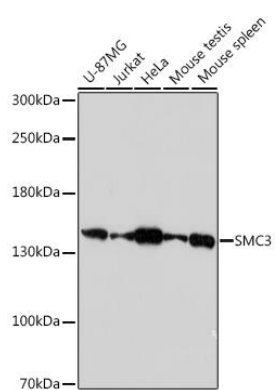
Recombinant protein of human SMC3.

#### Storage:

Store at -20°C. Avoid freeze / thaw cycles. Buffer: PBS with 0.02% sodium azide, 50% glycerol, pH7.3.

## Product Images

---



Western blot - SMC3 Rabbit pAb (CAB18402)