

# Bcl2(Isoform Beta) Rabbit Polyclonal Antibody



CAB18415

## Product Information

### Size:

20uL, 50uL, 100uL, 200uL

### Observed MW:

22KDa

### Calculated MW:

## Protein Background

This gene encodes a member of the B cell lymphoma 2 protein family. Members of this family regulate cell death in multiple cell types and can have either proapoptotic or antiapoptotic activities. The protein encoded by this gene inhibits mitochondrial-mediated apoptosis. This protein is an integral outer mitochondrial membrane protein that functions as part of signaling pathway that controls mitochondrial permeability in response to apoptotic stimuli. This protein may also play a role in neuron cell survival and autophagy. Abnormal expression and chromosomal translocations of this gene are associated with cancer progression in numerous tissues. Alternate splicing results in multiple transcript variants. [provided by RefSeq, Sep 2015]

## Immunogen information

### Applications:

WB

### Reactivity:

Human, Rat

### Gene ID:

12043

### Uniprot

P10417

### Synonyms:

Bcl-2; C430015F12Rik; D630044D05Rik

## Antibody Information

### Recommended dilutions:

WB 1:500 - 1:2000

### Source:

Rabbit

### Isotype:

IgG

### Immunogen:

Recombinant protein of Mouse Bcl2(Isoform Beta).

### Storage:

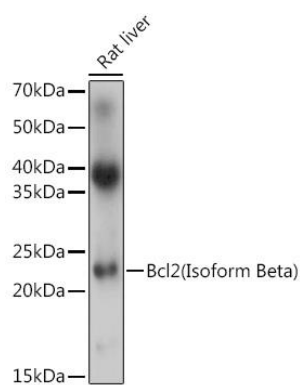
Store at -20°C. Avoid freeze / thaw cycles. Buffer: PBS with 0.02% sodium azide, 50% glycerol, pH7.3.

### Purification:

Affinity purification

## Product Images

---



Western blot - Bcl2(Isoform Beta) Rabbit pAb (CAB18415)