

RPGR Rabbit Polyclonal Antibody



CAB1844

Product Information

Size:

20uL, 50uL, 100uL, 200uL

Observed MW:

85kDa

Calculated MW:

52kDa/70kDa/83kDa/90kDa/
113kDa/127kDa

Applications:

WB

Reactivity:

Human, Mouse

Protein Background

This gene encodes a protein with a series of six RCC1-like domains (RLDs), characteristic of the highly conserved guanine nucleotide exchange factors. The encoded protein is found in the Golgi body and interacts with RPGRIP1. This protein localizes to the outer segment of rod photoreceptors and is essential for their viability. Mutations in this gene have been associated with X-linked retinitis pigmentosa (XLRP). Multiple alternatively spliced transcript variants that encode different isoforms of this gene have been reported, but the full-length natures of only some have been determined.

Immunogen information

Gene ID:

6103

Uniprot

Q92834

Synonyms:

RPGR; COD1; CORDX1; CRD; PCDX; RP15; RP3; XLRP3; orf15

Antibody Information

Recommended dilutions:

WB 1:500 - 1:2000

Source:

Rabbit

Isotype:

IgG

Immunogen:

Recombinant fusion protein containing a sequence corresponding to amino acids 1-260 of human RPGR (NP_001030025.1).

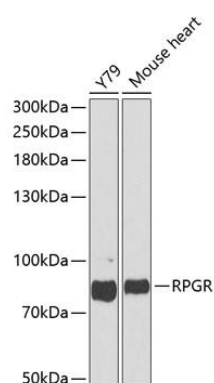
Storage:

Store at -20°C. Avoid freeze / thaw cycles. Buffer: PBS with 0.02% sodium azide, 50% glycerol, pH7.3.

Purification:

Affinity purification

Product Images



Western blot analysis of extracts of various cell lines, using RPGR antibody (CAB1844) at 1:1000 dilution. Secondary antibody: HRP Goat Anti-Rabbit IgG (H+L) (CABS014) at 1:10000 dilution. Lysates/proteins: 25ug per lane. Blocking buffer: 3% nonfat dry milk in TBST.