

SLC39A2 Rabbit Polyclonal Antibody



CAB18452

Product Information

Size:

20uL, 50uL, 100uL, 200uL

Observed MW:

33KDa

Calculated MW:

Applications:

WB

Reactivity:

Rat

Protein Background

This gene encodes a member of the ZIP family of metal ion transporters. The encoded protein functions as a zinc transporter. Mutations in this gene may be associated with susceptibility to carotid artery disease. Multiple transcript variants have been described. [provided by RefSeq, Mar 2010]

Immunogen information

Gene ID:

29986

Uniprot

Q9NP94

Synonyms:

6A1; ETI-1; ZIP-2; ZIP2; SLC39A2

Antibody Information

Recommended dilutions:

WB 1:500 - 1:2000

Source:

Rabbit

Isotype:

IgG

Purification:

Affinity purification

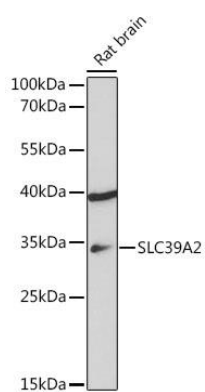
Immunogen:

Recombinant protein of human SLC39A2.

Storage:

Store at -20°C. Avoid freeze / thaw cycles. Buffer: PBS with 0.02% sodium azide, 50% glycerol, pH7.3.

Product Images



Western blot - SLC39A2 Rabbit pAb (CAB18452)