

# MRPS18C Rabbit Polyclonal Antibody



CAB18453

## Product Information

### Size:

20uL, 50uL, 100uL, 200uL

### Observed MW:

15kDa

### Calculated MW:

### Applications:

WB IHC IF

### Reactivity:

Human, Mouse, Rat

## Antibody Information

### Recommended dilutions:

WB 1:500 - 1:2000

### Source:

Rabbit

### Isotype:

IgG

### Purification:

Affinity purification

## Protein Background

### Immunogen information

#### Gene ID:

51023

#### Uniprot

Q9Y3D5

#### Synonyms:

CGI-134; MRP-S18-1; MRP-S18-c; MRPS18-1; S18mt-c; mrps18-c; MRPS18C

#### Immunogen:

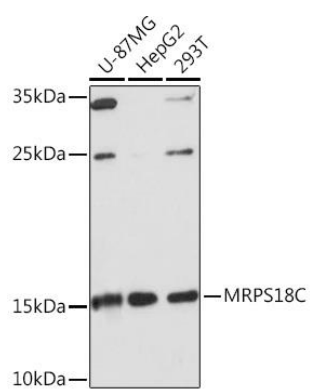
Recombinant protein of human MRPS18C.

#### Storage:

Store at -20°C. Avoid freeze / thaw cycles. Buffer: PBS with 0.02% sodium azide, 50% glycerol, pH7.3.

## Product Images

---



Western blot - MRPS18C Rabbit pAb (CAB18453)