

IER5 Rabbit Polyclonal Antibody



CAB18457

Product Information

Size:

20uL, 50uL, 100uL, 200uL

Observed MW:

34kDa

Calculated MW:

Applications:

WB IHC IF

Reactivity:

Human, Mouse, Rat

Antibody Information

Recommended dilutions:

WB 1:500 - 1:2000 IHC 1:50
- 1:200 IF 1:50 - 1:200

Source:

Rabbit

Isotype:

IgG

Purification:

Affinity purification

Protein Background

Immunogen information

Gene ID:

51278

Uniprot

Q5VY09

Synonyms:

SBBI48; IER5

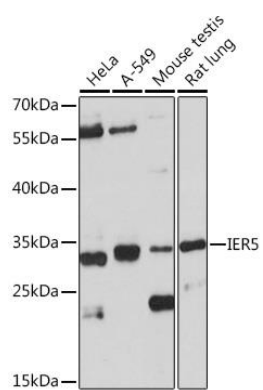
Immunogen:

Recombinant protein of human IER5.

Storage:

Store at -20°C. Avoid freeze / thaw cycles. Buffer: PBS with 0.02% sodium azide, 50% glycerol, pH7.3.

Product Images



Western blot - IER5 Rabbit pAb (CAB18457)