

ARG1 / Arginase 1 Rabbit Polyclonal Antibody



CAB1847

Product Information

Size:

20uL, 50uL, 100uL, 200uL

Observed MW:

40kDa

Calculated MW:

25kDa/34kDa/35kDa

Applications:

WB IHC IF

Reactivity:

Human, Mouse, Rat

Protein Background

Arginase catalyzes the hydrolysis of arginine to ornithine and urea. At least two isoforms of mammalian arginase exist (types I and II) which differ in their tissue distribution, subcellular localization, immunologic crossreactivity and physiologic function. The type I isoform encoded by this gene, is a cytosolic enzyme and expressed predominantly in the liver as a component of the urea cycle. Inherited deficiency of this enzyme results in argininemia, an autosomal recessive disorder characterized by hyperammonemia. Two transcript variants encoding different isoforms have been found for this gene.

Immunogen information

Gene ID:

383

Uniprot

P05089

Synonyms:

ARG1; arginase-1

Antibody Information

Recommended dilutions:

WB 1:500 - 1:2000 IHC 1:50
- 1:200 IF 1:50 - 1:200

Source:

Rabbit

Isotype:

IgG

Purification:

Affinity purification

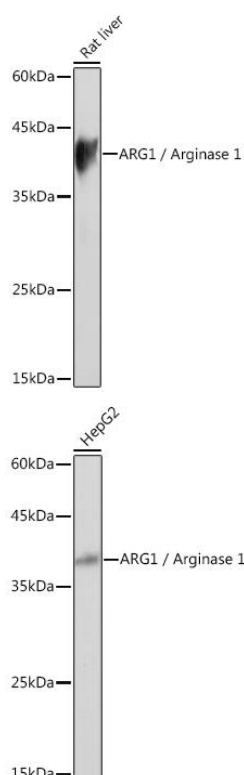
Immunogen:

Recombinant fusion protein containing a sequence corresponding to amino acids 1-322 of human ARG1 / Arginase 1 (NP_000036.2).

Storage:

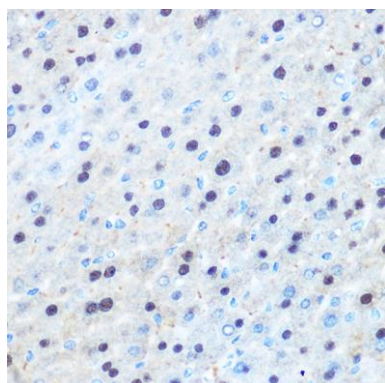
Store at -20°C. Avoid freeze / thaw cycles. Buffer: PBS with 0.02% sodium azide, 50% glycerol, pH7.3.

Product Images

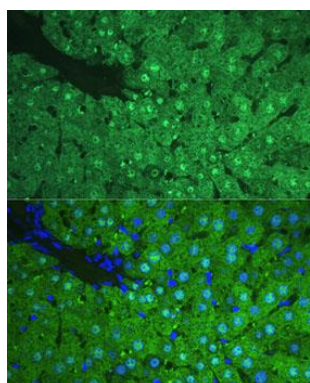


Western blot analysis of extracts of Rat liver, using ARG1 / Arginase 1 Rabbit pAb (CAB1847) at 1:1000 dilution. Secondary antibody: HRP Goat Anti-Rabbit IgG (H+L) (CABS014) at 1:10000 dilution. Lysates/proteins: 25ug per lane. Blocking buffer: 3% nonfat dry milk in TBST. Detection: ECL Basic Kit (CABM00020). Exposure time: 1s.

Western blot analysis of extracts of HepG2 cells, using ARG1 / Arginase 1 Rabbit pAb (CAB1847) at 1:1000 dilution. Secondary antibody: HRP Goat Anti-Rabbit IgG (H+L) (CABS014) at 1:10000 dilution. Lysates/proteins: 25ug per lane. Blocking buffer: 3% nonfat dry milk in TBST. Detection: ECL Basic Kit (CABM00020). Exposure time: 1s.



Immunohistochemistry of paraffin-embedded mouse liver using ARG1 / Arginase 1 Rabbit pAb (CAB1847) at dilution of 1:100 (40x lens).



Immunofluorescence analysis of Rat liver using ARG1 / Arginase 1 antibody (CAB1847) at dilution of 1:100. Blue: DAPI for nuclear staining.